

Midland Cycle Club

proudly presents

1987 — 176km Historical

(First Held 1897)

Race Sponsor

JLV

Corporation Ltd



**BEVERLEY TO PERTH
CYCLING CLASSIC**



SATURDAY 14th NOVEMBER 1987

Race Commences Shire Offices,
Vincent St., Beverley — 9.30 a.m.

Race Finishes Morrison Road,
Midland Oval — Approx 2 p.m.



J.L.V. GROUP OF COMPANIES



CORPORATION LTD.

Group Administration



CONSTRUCTORS PTY. LTD.

Civil, Structural, Mechanical Construction.
Earthmoving & Excavation, Dams — Roads —
Open Cut Mining.



ELECTRICAL ENGINEERS AND CONTRACTORS

General Electrical Contractors, Power Lines



URETHANE & BELTING PRODUCTS

Wear Resistant Mouldings, Conveyor Belting.



MANUFACTURING DIVISION

Welding Technology, Automated Welding and
Hardfacing. Trailer Mounted Man Hoists.



PIPELINES

N.D.T., Hydrostatic Services



DEFTLIFT

Ariel Work Platforms

ADDRESS: 85 McCOY STREET, MYAREE, W.A. 6154

Phone: 330 5066

TELEX AA95543 FAX (09) 330 5362



'Midland Cycle Club'

*The Committee & Members of the
Midland Cycle Club
WELCOME ALL
to the running of the*

1987

**JLV CORPORATION LTD.
BEVERLEY TO PERTH
Cycling Classic**

*(90 YEARS OF CYCLING)
FIRST HELD 1897*

Members of the Midland Cycle Club are proud and privileged to be associated with the J.L.V. Corporation Ltd. (1987 RACE SPONSORS) AND THE BEVERLEY SHIRE COUNCIL IN THE PROMOTION OF THIS YEARS "BEVERLEY".





'Midland Cycle Club'

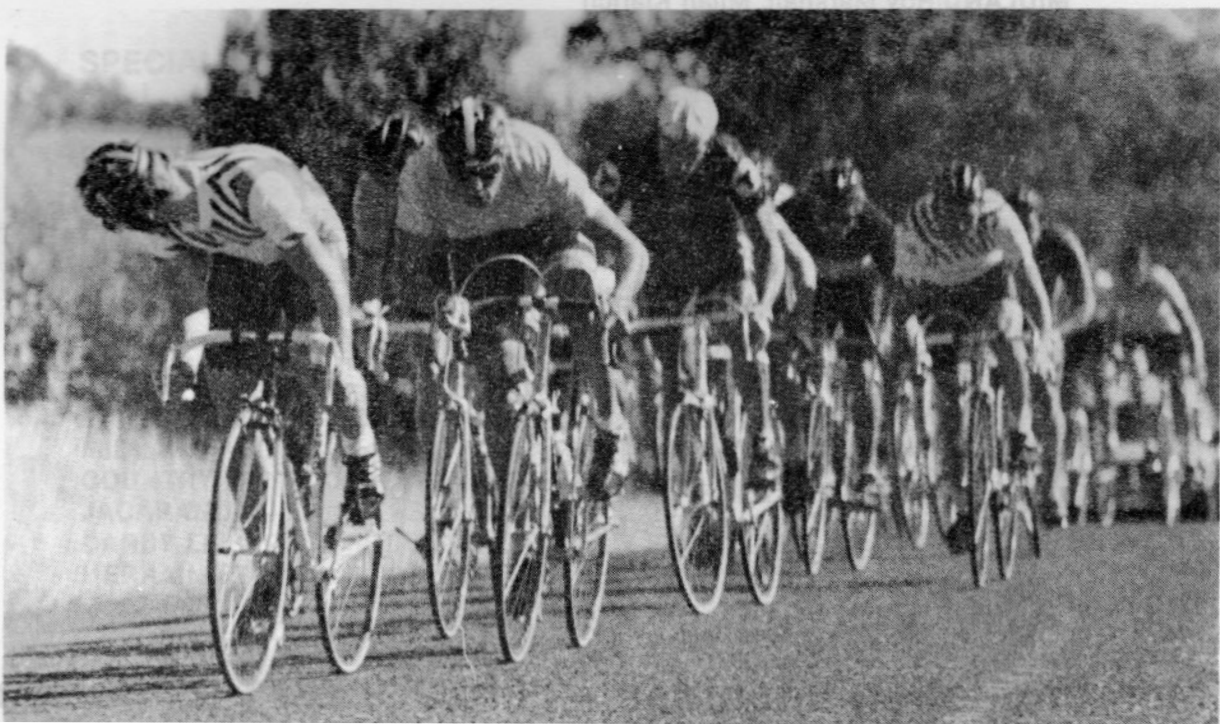
*The Committee & Members of the
Midland Cycle Club
WELCOME ALL
to the running of the*

1987

**JLV CORPORATION LTD.
BEVERLEY TO PERTH
Cycling Classic**

*(90 YEARS OF CYCLING)
FIRST HELD 1897*

Members of the Midland Cycle Club are proud and privileged to be associated with the J.L.V. Corporation Ltd. (1987 RACE SPONSORS) AND THE BEVERLEY SHIRE COUNCIL IN THE PROMOTION OF THIS YEARS "BEVERLEY".





THE 1987 "BEVERLEY" WILL BE OFFICIALLY STARTED BY MR REG HEAL PRESIDENT BEVERLEY SHIRE COUNCIL.

OFFICER (M.C.C.)

PATRON Mr Alf Charleson

PRESIDENT Edd Barron

SECRETARY Mrs Ethel Perich

TREASURER Mrs Betty Smith



RACE OFFICIALS

COMMISSAIRE Steele Bishop, Mal Barker, Vic Hayes.

T.V. COMMENTATOR Ken Benson

RACE COMMENTATOR Barry Ingram

OFFICIAL PHOTOGRAPHER Alby Taylor

TIME KEEPER Graham McNab, John Emmerton, Dan Logan, Jack Perich.

FIRST AID Tony Pavich, Chris Hayes, Audrey Barker.

LEAD CARS Lyle Withers, Ray Russell

CLUB REPRESENTATIVES

BEVERLEY John Smith, Betty Smith

YORK Ray Russel

NORTHAM Beress Brookes, Bill Ashworth

TOODYAY Jack Perich, Vic Hayes

GIDGEGANNUP John Emmerton

NOBLE FALLS Dan Logan

MIDLAND Roy Marshall, Milan Klarich

EX RACING CYCLISTS REUNION John Perks



STEELE BISHOP



CYCLING EVENTS APPROXIMATE ARRIVAL TIMES

— MORRISON ROAD MIDLAND OVAL

JUVENILE DIV. 2 — 12.45 p.m.

JUVENILE DIV. 1 — 1.00 p.m.

LADIES TRIATHLONS — 1.15 p.m.

MENS TRIATHLONS — 1.40 p.m.

SENIOR JUNIOR AMATEURS — 1.50 p.m.

"BEVERLEY" RIDERS — 2.00 p.m.

Race Promotion Enquiries — Ph: 279 2871 (E. Barron)

We wish to acknowledge the roll our sponsors have played in the success of todays race.

J.L.V. CORPORATION LTD. — 85 McCOY STREET, MYRAREE
SHIRE OF BEVERLEY — VINCENT STREET, BEVERLEY
NORTHAM WORKERS CLUB — FITZGERALD STREET NORTHAM.
IAN J. BROWNE JEWELLER — 731 HAY STREET PERTH
PIONEER QUARRIES — 123 BURSWOODS ROAD, VICTORIA PARK.
A.J. PRIEST & CO. — PLANET STREET, CARLISLE.
MILLS SIGNS — 15 ROBERT STREET, MIDLAND
GEORGE SARICH REAL ESTATE — 11 THE CRESCENT, MIDLAND
STOCKMAN & SON — 15 LOTON AVE., MIDLAND
AD TURNER ELECTRICIAN — 52 WESTON DRIVE, SWANVIEW
NORM REYNOLDS RETRAVISION — AVON TERRACE, YORK
JOHN LOBB & ASSOCIATES — STAFFORD STREET, MIDLAND
DON BEVAN AUTOMOTIVES — STANHOPE GARDENS
JOE BERSAN · NEW ERA SHUTTERS — VICTORIA STREET, MIDLAND
WRIGHTS PHARMACY — HELENA STREET, MIDLAND
RAKICHS STORE — GREAT NORTHERN HIGHWAY, BASKERVILLE
C.J.T. HANNIGAN & SON — 2 GORDON STREET, NORTHAM
RAY BLOONFIELD · BEVERLEY DELI — VINCENT STRET, BEVERLEY
HUGH DEVENISH REAL ESTATE — JAMES STREET, GUILDFORD
REG HEAL SHIRE PRESIDENT — BEVERLEY
PENNO SIGNS — 50 ELGEE STREET, BELLEVUE
WESTPAC BANKING CORPORATION — BEVERLEY
BEVERLEY CO-OP — BEVERLEY
B.R. & K.M. FERGUSON — BEVERLEY
AVON TRADING — VINCENT STREET, BEVERLEY
FREEMASONS TAVERN — VINCENT STREET, BEVERLEY
McEVOY & TURNER BUTCHERS — VINCENT STREET, BEVERLEY
HOTEL BEVERLEY — VINCENT STREET, BEVERLEY
BEVERLEY SELF SERVICE — VINCENT STREET, BEVERLEY
ADDE FISHER — BEVERLEY
STAN NOBILI — THE AVENUE, MIDLAND
GEOFFS SMASH REPAIRS— JAMES STREET, GUILDFORD
VIC SUSICH B.P. SERVICE STATION — GT. NORTHAM HIGHWAY, MIDDLE SWAN
SWAN DRY CLEANERS — 844 BEAUFORT STREET, INGLEWOOD
ARTHUR DEHL DARLING RANGE DAIRY — DARLINGTON

SPECIAL PRIZES

P. & L. JAMES — 10 HELENA STREET, MIDLAND
BEAUREPAIRES — MIDLAND
RAY WARD — 37 CAMDEN STREET, MORLEY —
ISAIA LIQUORS — 684 ALBANY HIGHWAY, EAST VIC. PARK
ALBERTS HAIRPORT — STAFFORD STREET, MIDLAND
OPSM — STAFFORD STREET, MIDLAND
BEVERLEY SHIRE — VINCENT STREET, BEVERLEY
HARRY PLUNKETT — 40 GERNEY ROAD, HAMILTON HILL
MIDLAND TRADING — 71 GREAT NORTHERN HIGHWAY, MIDLAND
GLOBE MEATS — GREAT EASTERN HIGHWAY, BELLEVUE
W.A PRODUCE — GREAT NORTHERN HIGHWAY, MIDLAND
ETHEL & JACK PERICH — 40 WELLATON STREET, MIDVALE
MIDLAND AUDIO — 14 GREAT NORTHERN HIGHWAY, MIDLAND
COUNTRY MUSIC CENTRE — VICTORIA STREET, MIDLAND
JACARANDA — TUCKERS ARCADE, MIDLAND
DARBY LEISURES PRODUCTS "MELVERN STAR" — 82 ROBINSON ROAD, BELMONT
HERRAIN STUDIO — 1 GREAT NORTHERN HIGHWAY, MIDLAND.

JLV CORPORATION LTD.

SPONSOR



BERVERLEY to PERTH

176km CYCLING ROAD RACE — SATURDAY 14th NOV. '87

**WIN A
BOYS or GIRLS
10 SPEED CYCLE
VALUE \$230.00**

CYCLE BY BICYCLE ENTREPRENEUR

157 Great Eastern Highway, Belmont. PH: 277 9181

All the entries will be placed in the drum provided which will be handed into the official car that will be stationed at the sprint finish line in the following towns en-route.

Beverley (Start) Shire Offices, Vincent Street - 9.30 a.m.

York — Avon Terrace - Approx 10.15 a.m.

Northam — Fitzgerald Street - Approx 11.00 a.m.

Toodyay — Stirling Street, - Approx 11.30 a.m.

Midland — Morrison Road, - Approx 2.00 p.m.

RULES — 1 ENTRY PER PERSON, 15 YEARS AND UNDER ARE ELIGIBLE

The Bicycle Entrepreneur

Staffed by National level pro-cyclists and mechanics.
Campagnolo tool kit
for specialist repairs!

W.A.s Biggest Cycle Retailers!!
Major sponsors of 5 racing and triathlon teams, local events and University Recreation coaching courses.

277 9181

Open 7 Days Per Week

8.30 am — 5.30 pm

"RING US LAST FOR THE BEST PRICE"

157a GREAT EASTERN HWY. BELMONT



JIM KRYNEN

1986 WINNER

STOCK INCLUDES OVER 15 LINES OF EUROPEAN AND AUSTRALIAN MADE FRAMES.

CATERING FOR THE COMPLETE RANGE OF TRIATHLON, RACING & RECREATION

JACK McSHANE'S DISCOUNT AUTO SPARES

SPECIALS

(NO DISCOUNT BOOKS)

GTX Oil 5 Litres	\$12.99
Set of 4 Bosch Spark Plugs	\$7.15
Holden/Falcon Oil Filters	\$4.50
S11 Points suit Holden/Falcon	\$3.50
Brake Drums Machined	\$15.00
Discs Machined	\$20.00pr.
Brake Shoe suit Holden/Falcon	\$19.50pr.
Disc Pads — Top Quality	from \$19.00pr.



Our many services include 1 hour top quality photo processing on quality Kodak Paper

12 Exposures	\$7.99
24 Exposures	\$11.99



35 Gt Northern Hwy 274 1177 274 5508



FAST EDDYS Cafe

ESSEX STREET, FREMANTLE
PHONE 336 1671

At Fast Eddys you can have whatever you want when you want it.

At Fast Eddys, time is immaterial.

Whether you've just flown in from overseas or the Eastern States and want a bacon and eggs breakfast at 4.00 in the afternoon, whether you're desperate for refreshment at some unearthly hour of the morning, or even if you're just hankering after a good, tasty snack around lunchtime; Fast Eddys is always ready for your custom, every hour of the day, every day of the week.

Here are a few descriptive words that will help explain what Fast Eddys is all about:

ëddy'ble, adj. A massive understatement of the esculent condition of everything (excepting furniture) at Fast Eddys.

There doesn't seem to be any "most popular" items on the menu at Fast Eddys — because everything's equally brilliant!

Fast Eddys cater to any taste; from sit down steak dinners to sundaes to go, any time of the day or night.

ëddy'fied, adj. The refreshed way you feel after eating at Fast Eddys.

The food is terrific. In fact, so terrific big quasi-national plastic food companies would spend multi-bucks to discover Fast Eddys' secret.

Fortunately, it's safe with Eddys. **ëddy'fice**, n. Large building where insomniacs whip up fantastic meals. Currently there are only two in the whole world; one in Milligan Street, Perth, the other in Essex Street, Fremantle.

Fast Eddys' has a quick service counter (more about that later). Also a B.Y.O. restaurant section, including al fresco (Fremantle only) with a bit more style, super menu and super-classy service.

ëddy'ã'cious, a. A curious passion which overcomes patrons of Fast Eddys as soon as the waitress serves their order. Recent study suggests the onset of eddyaciousness is triggered by the food, not the waitress.

If you're an avid supporter of Weight Watchers, you'll notice, as always, Fast Eddys has been left off their "Scrimpy Places to Eat" list.

No wonder. Fast Eddies heartily believe in giving people their money's worth.



As if eating at Fast Eddys wasn't treat enough! Just sitting there is fun.

Every conceivable place and space is decorated with the most confounding array of antique bric-a-brac and artifacts you'll ever see.

Most are guaranteed to produce an "I remember those!..."

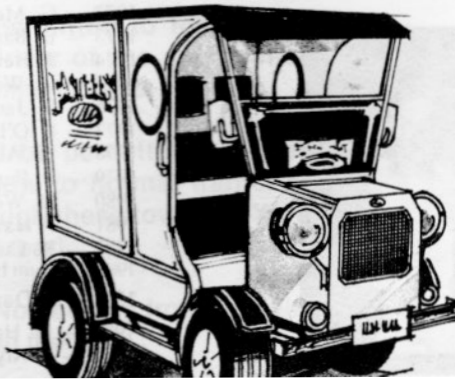
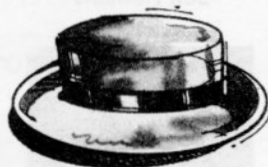
It's said that if you stay long enough, you'll see most of Western Australia pass through the doors.

ëddy'tor, nn., Creative genius who compiled Fast Eddys' fascinating menu. (Wait until you see the movie!) The eddytor will even let you keep a copy for your personal eddyfication.

Fast Eddys' menu reads like a who's who of the most splendid repasts ever invented. You can choose from real mouth movers such as Fast Eddys' Famous Monumental Banana Split, or the best burgers in town.

Plus there's a big selection of more substantial, but just as appetising meals from the sit down service food lists — which, or course, you can order from anytime.

ëddy'c'ã't'ional, a. The only word that adequately describes your first visit to either of the eddyfying Fast Eddys' eddyfices.

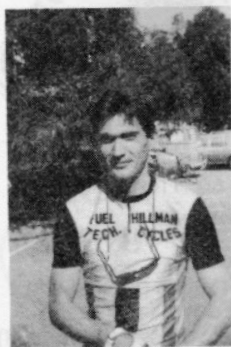




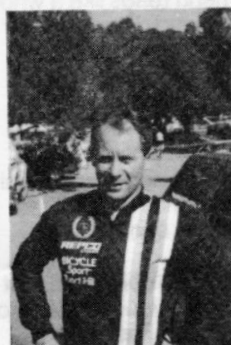
Doug Willing
1969



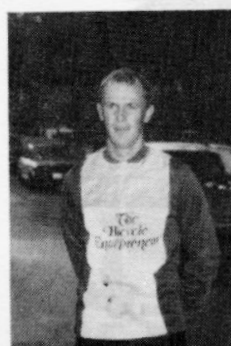
Jeff Hawkins
1981



Damian Buswell
1983



Murray Hall
1985



Previous Winners

- 1897 — J. Beck (45min.) 6.47.30
- 1898 — J. Bridgwood (32min.) 7.16.0
- 1899 — W. Burville (60min.) 8.29.0
- 1900 — No race
- 1901 — A. Jewell (scr.) 6.46.57
- 1902 — No race
- 1903 — N. Salamons (30min.) 6.57.24
- 1904 — T.W. Simpson (7min.) 8.27.26
- 1905 — C. Howard (21min.) 8.50.30
- 1906 — A.E. Wright (5min.) 6.10.38
- 1907 — G. Beardon (60min.) 7.0.0
- 1908 — C. Pegler (26min.) 6.4.30
- 1909 — A. Pianta (18min.) 6.0.30
- 1910 — C.J. Senior (30min.) 7.10.0
- 1911 — E.M. Gray (45min.) 6.2.0
- 1912 — A. Wann (22min.) 6.26.5
- 1913 — M. Wann (35min.) 6.22.22
- 1920 — T. Bridges (50min.) 7.2.10
- 1921 — E. Eagles (35min.) 6.42.45
- 1922 — J.W. Haydon (45min.) 7.11.6
- 1923 — H. Williams (40min.) 6.10.10
- 1924 — K. Block (42min.) 6.12.15
- 1925 — R. Foy (34min.) 5.57.5
- 1926 — K. Mellows (30min.) 6.40.45
- 1927 — F. Jones (16min.) 5.35.0
- 1928 — G. Pratt (40min.) 6.39.10
- 1929 — W. Pender (36min.) 5.33.56
- 1930 — J.R. Mouldsdale (25min.) 6.16.53
- 1931 — E. Willis (38min.) 6.27.59
- 1932 — J. Williams (44min.) 6.17.3
- 1933 — R. Pingelly (30min.) 6.16.50
- 1934 — Replaced by 2-day test race
- 1935 — R. Logue (48min.) 5.40.8
- 1936 — A.W. Snelgar (35min.) 6.23.10
- 1937 — W.J. Maher (90min.) 6.23.10
- 1938 — J.H. Hall (42min.) 5.39.32
- 1939 — F. Bassula (18min.) 5.35.58
- 1940 — W.A. Bonser (3½min.) 5.35.25
- 1941 — W. Kyrwood (26min.) 6.7.30
- 1946 — W. McWhirter (15min.) 5.29.58
- 1947 — A.R. Priestly (19min.) 5.32.18
- 1948 — D. Dawson (13min.) 5.33.20
- 1949 — G. Gerrard (21min.) 5.32.10
- 1950 — W. Corti (10min.) 5.36.50
- 1951 — D. Wilson (12½min.) 5.37.23
- 1952 — F. Suckling (12½min.) 5.5.12
- 1953 — C. Tregelles (32min.) 5.17.41
- 1954 — J. Barron (38min.) 4.53.05
- 1955 — E. O'Hara (20min.) 5.12.46
- 1956 — John Oliver (scr.) 5.3.12
- 1957 — R. Cotter (25min.) 4.56.0
- 1958 — B. Dawson (35min.) 4.38.40
- 1959 — J. Panto (38min.) 5.25.35
- 1960 — R. Floyd (37min.) 5.10.8
- 1961 — A. Kinghorn (46min.) 5.8.16
- 1962 — D. Knowles (31min.) 5.2.37
- 1963 — L. Suckling (4min.) 4.19.0
- 1964 — B. Barron (scr.) 4.47.23
- 1965 — M. Martino (scr.) 4.38.17
- 1966 — L. Tognolini (scr.) 4.53.34
- 1967 — L. Johnson (12min.) 4.58.55
- 1968 — G. Maloney (scr.) 5.23.35
- 1969 — D.J. Willing (25min.) 5.0.50
- 1970 — J. Tognolini (45min.) 5.5.22
- 1971 — D. Wohlers (28min.)
- 1972 — G. McVilly (scr.)
- 1973 — B. Barron (12min.)
- 1974 — J. Hewson (26min.)
- 1975 — D. Williams (41min.)
- 1976 — G. Jack (44min.) 4.46.30
- 1977 — L. O'Brien (13min.) 4.25.00
- 1978 — M. Atkinson (6min.) 4.31.00
- 1979 — P. Panton
- 1980 — D. Wohlers
- 1981 — J. Hawkins
- 1982 — R. Currie
- 1983 — Dam Buswell

1984- K. Davis

1985 — M. Hall

1986 — J. Krynen

Fastest Times

- 1897 — J. Beck (45min.) 6.47.30
- 1898 — A.E. Brown (5min.) 7.5.30
- 1899 — J. Beck (scr.) 8.5.20
- 1900 — No race
- 1901 — A. Jewell (scr.) 6.46.57
- 1902 — No race
- 1903 — O. Prowse (scr.) 6.38.57
- 1904 — T.W. Simpson (7min.) 8.27.26
- 1905 — A.E. Wright (1min.) 8.41.25
- 1906 — A.E. Wright (5min.) 6.10.38
- 1907 — A. McDonald (scr.) 6.36.15
- 1908 — W.J. Maher (12min.) 6.1.33
- 1909 — A. Pianta (18min.) 6.0.30
- 1910 — C.J. Senior (30min.) 7.10.0
- 1911 — A. Kaiser (17min.) 5.58.33
- 1912 — E.M. Gray (5min.) 6.23.30
- 1913 — A. Wann (scr.) 6.8.53
- 1920 — A. Shulze (scr.) 6.17.40
- 1921 — A. Shulze (scr.) 6.27.36
- 1922 — A. Shulze (scr.) 6.45.0
- 1923 — H. Williams (40min.) 6.10.10
- 1924 — K. Block (42min.) 6.12.15
- 1925 — W.E. Marshall (6min.) 5.42.25
- 1926 — H.K. Smith (scr.) 6.19.55
- 1927 — F. Jones (16min.) 5.35.0
- 1928 — H. Marshall (scr.) 6.1.12
- 1929 — H. Marshall (scr.) 5.21.14
- 1930 — F. Jones (3min.) 6.1.40
- 1931 — F. Jones (scr.) 5.59.29
- 1932 — A. Hargraves (10min.) 5.50.50
- 1933 — W. Pender (5min.) 5.56.58
- 1934 — Replaced by 2-day test race
- 1935 — D. Tosland (scr.) 5.15.38
- 1936 — G. Hebbard (2½min.) 6.5.10
- 1937 — W.R. Appleton (4min.) 5.12.25
- 1938 — M. Martin (7½min.) 5.26.10
- 1939 — C.M. Haupt (scr.) 5.28.52
- 1940 — W.A. Bonser (3½min.) 5.53.25
- 1941 — W.A. Bonser (scr.) 5.51.46
- 1946 — E. Barron (scr.) 5.22.10
- 1947 — W. Bonser (scr.) 5.22.12
- 1948 — E. Barron (scr.) 5.28.46
- 1949 — A. Kearns (scr.) 5.24.16
- 1950 — T. Hunter (4min.) 5.31.55
- 1951 — N. Burdus (scr.) 5.29.46
- 1952 — N. Burdus (scr.) 4.57.45
- 1953 — L. Suckling (10min.) 4.56.33
- 1954 — Jim Oliver (scr.) 4.19.30
- 1955 — P. Panton (10min.) 5.2.46
- 1956 — John Oliver (scr.) 5.3.12
- 1957 — John Oliver (scr.) 4.42.20
- 1958 — P. Panton (scr.) 4.15.22
- 1959 — L. Campbell (scr.) 4.51.36
- 1960 — A. Perejuan (scr.) 4.57.40
- 1961 — L. Suckling (scr.) 4.40.10
- 1962 — D. Bentley (8min.) 4.40.38
- 1963 — L. Suckling (4min.) 4.19.0
- 1964 — B. Barron (scr.) 4.47.23
- 1965 — M. Martino (scr.) 4.38.17
- 1966 — L. Tognolini (scr.) 4.53.34
- 1967 — L. Tognolini (scr.) 4.46.55
- 1968 — G. Maloney (scr.) 5.23.35
- 1969 — N. Veale (scr.) 4.29.02
- 1970 — B. Barron (scr.) 4.33.12
- 1971 — D. Wohlers (28min.)
- 1972 — G. McVilly (scr.)
- 1973 — S. Pember (scr.)
- 1974 — B. Hunt (scr.)
- 1975 — B. Hunt (scr.)
- 1976 — G. McVilly (scr.) 4.13.07
- 1977 — J. Ritchie (scr.) 4.24.19
- 1978 — D. Jones (scr.) 4.27.40
- 1979 — P. Panton
- 1980 — J. Hawkins
- 1981 — J. Hawkins
- 1982 — Dam Buswell
- 1983 — Dam Buswell

1984- K. Davis

1985 — M. Hall

1986 — J. Krynen

In this years race their are five riders who have previously won "Beverlys" so any one of the following cyclists could equal, Bevan Barron & David Wohlers record of two wins:- Doug Willing, Geff Hawkins, Damien Buswell, Murray Hall, Jim Krynen.

RIDERS COMPETING

PROFESSIONALS — 176km GRADE HANDICAP

- | | | |
|------------------|------------------------|-------------------------|
| 1. Wylie | 14. A. Lawes | 25. N. Thomas (31 mins) |
| 2. D. Buswell | 15. R. Twyerould | 26. J. Mullins |
| 3. J. Krynen | 16. A. White | 27. N. Hartnett |
| 4. J. Hawkins | 17. G. Lewis (15 mins) | 28. D. Townson |
| 5. P. Johnson | 18. S. Gabrynowicz | 29. D. Lee |
| 6. M. Hall (SCR) | 19. W. Rudd | 30. R. Lee |
| 7. G. Wright | 20. M. Bown | 31. M. Townsend |
| 8. T. Petch | 21. G. Hindmarsh | 32. B. Coe (48 mins) |
| 9. B. Gillin | 22. F. Kettle | 33. P. Tognolini |
| 10. P. Wylie | 23. D. Woodhouse | 34. A. Dovey |
| 11. D. Lightfoot | 24. D. Willing | 35. P. Briggs |
| 12. H. Barnett | | |

PROFESSIONAL RIDERS PRIZE MONEY

Outright Winner — \$2000.00 Cash plus JLV Corporation Ltd. Trophy

Peter & Liz James — Singer Sewing Machine — \$700.00

Harry Plunkett Trophy

Beverley Shire Trophy — Herrain Studio Portrait — Jacaranda Bouquet Flowers

(Total Prizes \$2955.00)

Fastest Time — \$1000.00 Cash plus 4 Beaurepaires Passenger Recap Car Tyres plus Free Brake Check — Isaia Trophy.

PRO 1. — 1st \$120.00 Cash — 2nd \$80 — 3rd \$60 — 4th \$50

PRO 2. — 1st 100 Cash — 2nd \$60 — 3rd \$50

LEAGUE 1. — 1st \$100 Cash — 2nd \$60 — 3rd \$50

LEAGUE 2. — 1st \$100 Cash — 2nd \$60

SPRINTS FIRST PLACE ONLY (4 GROUPS)

YORK — WINNER OF EACH CATEGORY \$15

NORTHAM — WINNER OF EACH CATEGORY \$15

TOODYAY — WINNER OF EACH CATEGORY \$15

SPECIAL PRIZE (BONUS \$30) FOR EACH UNPLACED RIDER FINISHING WITHIN 30 MINUTES OF A WINNING RIDER. ALL RIDERS CLAIMING PRIZE MONEY IN GRADES MUST COMPLETE THE RACE, WITHIN 30 MINUTES OF THE WINNING RIDER.

RIDERS MUST ATTEND PRESENTATIONS OR FORFEIT PRIZE MONIES.

Race Rules and Feeding Arrangements

Spare Wheels. One spare wheel vehicle will be permitted to follow each bunch, motor cycle officials will report to the driver of the spare wheel vehicle concerned if any rider is experiencing machine trouble.

Following Cars. No other following vehicles will be permitted, all riders handlers must make sure to allow unimpeded flow to normal traffic. No following cars are allowed to follow the riders through these towns — **York - Northam — Toodyay** [Pick up vehicle will follow at rear].

Feeding. Definitely No Feeding in towns en route No Feeding from a moving vehicle. unbreakable containers must be used when feeding.

RIDGEVIEW MOTOR CO.

192 GREAT EASTERN HWY, MIDLAND



We're offering you virtually a new car warranty (12 months unlimited kms) for a pre-selected used Volvo up to 7 years old and less than 160,000 kms.



\$23,490

VOLVO 240 GL 1984 AUTO SEDAN 6NY 323. Finished in silver mink with contrasting cloth interior, has travelled only 66,000km by one local owner. Power steering, air cond., vehicle with full service history. Excellent value.



\$31,990

12 Months warranty over Unlimited Kilometres. And only on Used Volvos that have survived the most meticulous inspection.

Choose a Used Volvo from Ridgeview Motors *real* value for money on a vehicle that has met stringent selection criteria.

In fact, we have so much faith in the all round reliability of our Used Volvos that each rigorously examined vehicle comes complete with a full 12 month written warranty *regardless of how far or how often you drive it!*

(Try getting such comprehensive coverage from a non-franchise dealer : it's impossible).

In a recent European survey, Volvo car were shown to outlast all competitive makes.

There are many reasons for this, but in particular, credit must go to its incomparable engine design (it rarely misses a beat and is famed worldwide for its low maintenance), and also to Volvo's extensive rust prevention treatments.

Quite simply - by being built better a Volvo last longer.

The Volvo reputation for safety considerations is second to none. And these vital design developments are build into every Volvo.

A special "safety cage" rigid chassis construction, padding where it protects and an engine that can slide under the car's passenger compartment.

In all areas, Volvo have put safety first. Shouldn't you demand to be safe?

VOLVO 1986 740 GL AUTO SEDAN 7KK 120. Immaculate vehicle, finished in sparkling burgundy with contrasting cloth interior. 2.3 litre motor, air cond, power steer, travelled only 49,000km. since new.



\$22,490

VOLVO 1983 240 GL STN WAGON 7KB 551. One owner with log books in near new condition. burgundy with caramel interior, air cond., power steer, alloy wheels and travelled only 88,000kms. Child seat available as optional extra



\$19,990

VOLVO 1982 244 GLE SEDAN 7KK 125. Metallic gold with matching trim, one owner vehicle travelled only 82,000kms. Full service history, air cond, power steer, full instrumentation and electric windows.

WHY USED VOLVO OUTSHINES A LOT OF NEW CARS

HOBBYS'S STORE

15 BALFOUR ROAD
SWAN VIEW

JUST OFF MORRISON ROAD

DELI & SERVICE STATION

Cheapest Petrol in Area

TRIATHLETES — PRIZES

MEN

1st — \$100 Cash plus J.L.V. Trophy
2nd \$90 — 3rd \$85 — 4th \$80 — 5th \$75 — 6th \$70 — 7th \$65
8th \$55 — 9th \$45 — 10th \$35.

LADIES

1st — \$100 Cash plus JLV Trophy
2nd \$65 — 3rd \$55 — 4th \$45 — 5th \$35 — 6th \$25

PLUS SPECIAL PRIZES

Recipient of prizes must be in attendance at the presentation ceremony

AMATEUR PRIZES

Senior Junior Riders — Outright winner \$100 Cash plus Alberts Hairport Trophy

A Grade — 1st \$60 plus Alberts Hairport of Midland Trophy

2nd \$30 — 3rd \$20 — 4th \$15 — 5th \$10

B Grade — 1st \$50 plus Alberts Hairport Trophy

2nd \$30 — 3rd \$20 — 4th \$15 — 5th \$10

C Grade — 1st \$50 plus Alberts Hairport Trophy

2nd \$30 — 3rd \$20 — 4th \$15 — 5th \$10

PLUS SPECIAL PRIZES

Recipient of prizes must be in attendance at the presentations

JUVENILE DIVISION 1 RIDERS

1st \$20 Cash plus JLV Winners Trophy

2nd \$15 — 3rd \$10 — 4th \$5

Fastest Time \$15

PLUS SPECIAL PRIZES

JUNENILE DIVISION 2 RIDERS

1st \$20 Cash plus JLV Winners Trophy

2nd \$12 — 3rd \$8

Fastest Time \$10



BRIAN GILLIN

Walkers Corner Deli

LYALL & ROBIN WITHERS
INVITE YOU TO INSPECT OUR
SPECIALTY LINES. MAKE YOUR
NEXT DINNER PARTY A GREAT
SUCCESS.

FANCY CHEESE'S
PATE, DIP &
SPREADS
CAVIAR &
SEAFOODS
279 Crawford Road
Inglewood 2722453

Bev's Saws

THE LIGHTWEIGHT CHAMP!

STIHL MINIBOSS 010

- Spricket-nosed guide bar
- Anti vibration
- Long-life oilmatic chain
- Automatic oiler
- Automatic clutch
- Powerful 37cc capacity
- 35cm (14") bar for reach



ONLY \$475
price includes
bonus offer

Top
price
ser
o

185 GT. EASTERN HWY.
MIDLAND
PHONE 274 2199

BEV'S SAWS FOR SALES



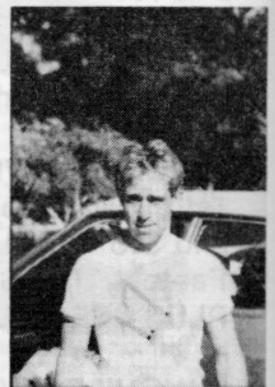
GARY WRIGHT



ROBERT TWYEROULD



MURRAY HALL



NEIL WYLIE

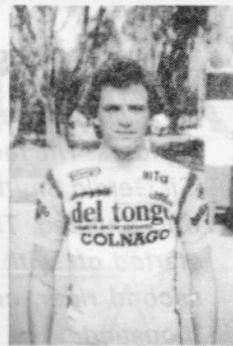
NOW - THE BEST CHAINSAW DEAL IN TOWN FROM BEV'S SAWS

Take advantage of this great
Bonus Offer Kit when you buy
your Mini Boss. Bevs Saws will
give you:

SPARE CHAIN
FILE
CHAIN OIL 1Lt
2 STROKE OIL 1Lt
SAFETY GOGGLES



CE • ALL STIHL PRODUCTS



PETER JOHNSON

TRIATHLON AND RACING
SPECIALISTS

HILLMAN



- Complete range of Frame
- High performance Components
- Professional Wheel Building - Repairs
- The right advice the first time -

341 3581
111 Brighton Road,
Scarborough 6014

CYCLES
(ESTABLISHED 45 YEARS)



PAUL WYLIE



BRENT COE



DAVID WOODHOUSE



ANDREW LAWES

Past History of the "Beverley"

The first Beverley to Perth race was held in 1897, and attracted a field of 14 riders. The race finished in front of Government House, and the Governor [Sir Gerald Smith] acted as judge. After the race he entertained all the riders who finished. The winner was J.W. Beck a Goldfields representative, who started off with a handicap of 45 minutes and won by that time from the second rider, crossing the finish line before a crowd numbering several thousand.

The slowest race was in 1905, when C. Howard starting off 21 minutes, won in 8 hours 50 minutes 30 seconds. The riders on this occasion often had to plough through water up to their knees, and for the whole of the journey they went through a nightmare experience.

For many years the record for the race, by a rider using a fixed wheel, was held by A. Kaiser [5hrs 58mins 33secs]. but in the 1929 event A.E. [Andy] Joss, the only fixed wheel competitor in the race, lowered that time to 5hrs 24mins 26secs. He rode on an 84 inch gear, and his performance was regarded as a remarkable one.



Typical Crowd at a Beverley Finish.



1927 BEVERLEY.

Top left: "Thirsty, oh, so thirsty." Geo. Budd, one of the scratch men at the Balup Feeding Station. Top right: W. Anderson, "all in," and Lawley Smith at the top of the Nine-mile. The hand is "Snow" Schryver's holding out a refresher for Smith. Bottom picture: Just before they fell at Lloyd's Crossing. F. Jones, the winner, in front, then F. Elliot, H. Marshall, who finished second, and others.

FLEET CYCLES & TACKLE

ESTABLISHED 1934

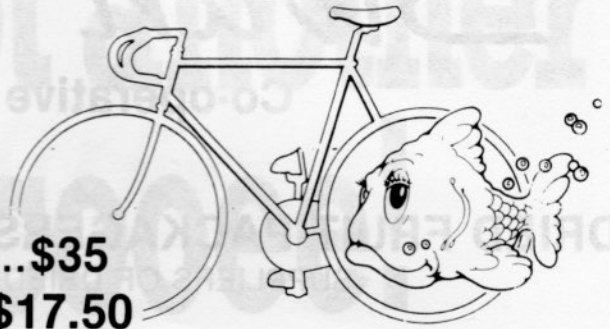
\$\$ MADNESS

TYRES

Competition 21 185gm...~~\$49.00~~...\$35

Training Tubular 300gm...~~\$25~~...\$17.50

Presta IRC Tubes...~~\$4.50~~...\$3.45



★ Cyclo Computer
Cateye CC-6000
8 Function - New Model
~~\$97~~ \$69

★
Silca
Track Pumps
~~\$72~~ \$56

★
Italian Tubular
Wheel Heat Treated
\$159

★
Gloves
\$9.95

★
Nicks
\$30

★
Superbe Pro 30% OFF

Hubs \$125

Pedals \$89

Rear Gear \$89

Front Gear \$36

★
SALE !!!
Tubular Wheels

Country Orders Welcome

Trade ins Welcome - Finance Available

143 WALTER ROAD MORLEY W.A. 6062

TELEPHONE: 076 0280 / 076 6400

Swan Settlers

Co-operative Association Ltd.

DRIED FRUIT PACKAGERS AND GENERAL MERCHANTS
SUPPLIERS OF DRIED FRUITS, NUTS AND BEANS.

RETAIL DRIED FRUIT & NUTS 296 4219

GREAT NOTHERN HIGHWAY, HERNE HILL

SUNBLEST RETAIL DRIED FRUITS 294 1302

20 BULLARA ROAD, GREENMOUNT

**DRIED FRUIT RECIPES and PROJECT
MATERIAL AVAILABLE FREE FROM:**

A.D.F.A., P.O. BOX 15, MIDLAND

HARDWARE: 296 4400 / 296 4511

TRADE ENQUIRIES: 296 4222

There's not another within cooee!

**Midnight Black
Sahara Turbo.**



This mean mother is the only Midnight Black customised Sahara Turbo 4x4 in WA.

It has front and rear airconditioning, 5 speaker radio cassette, power steering, armalite mag wheels, Desert Dueler tyres, alloy bull bar, Cibie spots,

seating for 8 and (believe it or not) an icebox console and ice maker.

She's a black beauty.

But since you won't be the only one with your eyes on her, don't waste any time getting to Midland Toyota.

Country clients
reverse charges. 274 4611

TRUE BLUE

274 4611

MIDLAND TOYOTA

SKY CHANNEL
(ON THE BIG SCREEN)
NIGHT-TIME SKYROCK

SPORTSPLAY
(ON THE BIG SCREEN)

SPORTS-BAR

4 POOL TABLES
1 FULL SIZE SNOOKER TABLE

MIDLAND



The INN Place

Introducing
THE JUNCTION ROOM

SOPHISTICATED LOUNGE FOR LADIES

OPENING EARLY OCTOBER

INCLUDES EATING ROOM - FOR LUNCH & DINNER

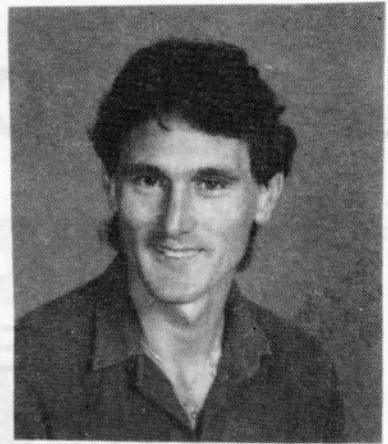
COCKTAIL BAR — WINTER FIRE PLACE

OPENING EARLY OCTOBER

Ziggy Gorczynski
Licensee

364 GT. EASTERN HWY. MIDLAND

PHONE: (09) 274 1433



GARY LEWIS

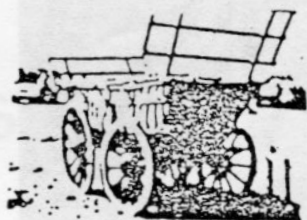
GRANITE CONSTRUCTION COMPANY

83 Great Eastern Highway, Bellevue 6056
TELEPHONE: 274 3155

STONE SAWING AND POLISHING

FLOOR AND WALL CLADING

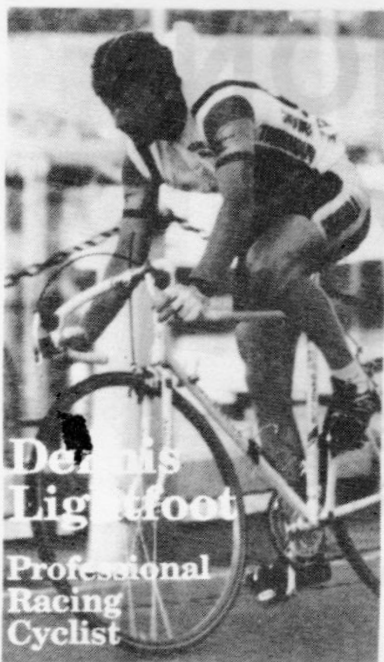
AND FIREPLACES



COLONIAL PAINTS & HARDWARE

OPEN 7 DAYS A WEEK
our customer comes first

212 GREAT EASTERN HIGHWAY
MIDLAND 6056 PH: 274 4772



BRAKES

— CLUTCH

— TUNE-UPS

ALL REPAIRS

SHELL RANGEWAY SELF SERVICE

142 GREAT EASTERN HIGHWAY,
SOUTH GUILDFORD 279 1060

THE NO. 1 TEAM IN MIDLAND



Be part of the winning team by choosing your next
vehicle from:

Our complete range of new



or one of our 50 Quality used vehicles.

MIDWAY FORD

DL1171

326 GT EASTERN HWY MIDLAND

PH. 274 4444



THE NO. 1 TEAM IN MIDLAND



Be part of the winning team by choosing your next vehicle from:

Our complete range of new
or one of our 50 Quality used vehicles.



MIDWAY FORD

DL1171

326 GT EASTERN HWY MIDLAND

PH. 274 4444





NOEL HARTNETT



ALAN DOVEY

KNOXS

DISCOUNT STORE

NOW BIGGER

& CHEAPER



MORE LIQUOR

BIGGER DISCOUNTS

CHECK US OUT

KNOXS of MIDLAND

273 GREAT EASTERN HIGHWAY

274 1581



VINCE GARREFFA
Presents

MONDO BUTCHERS

Beautiful Meat Specialists

Sportsmen and women all over
WESTERN AUSTRALIA enjoy
our HIGH QUALITY meats
and
LOW CHOLESTEROL meats

10 GREAT NORTHERN HIGHWAY
MIDLAND



DELIVERIES ARRANGED ANYWHERE

Orders 274 4629

Office 274 1138

85 McCOY STREET, MYAREE
TRY US SOON

TELEPHONE (09) 330 5066: TELEX AA 95543

RIDERS AUTOGRAPHS

VINCE GARRERFA
Presents



Sportmen and women all over
WESTERN AUSTRALIA enjoy
GOOD HIGH QUALITY meats
and



LOW CHOLESTEROL MEATS
& CHEAPER

TO GREAT NORTHERN HIGHWAY
ROUQUILLIQUOR

DELIVERIES ARRANGED ANYWHERE



Orders 274 4629

Office 274 1138

TRY US SOON
KNOXS of MIDLAND

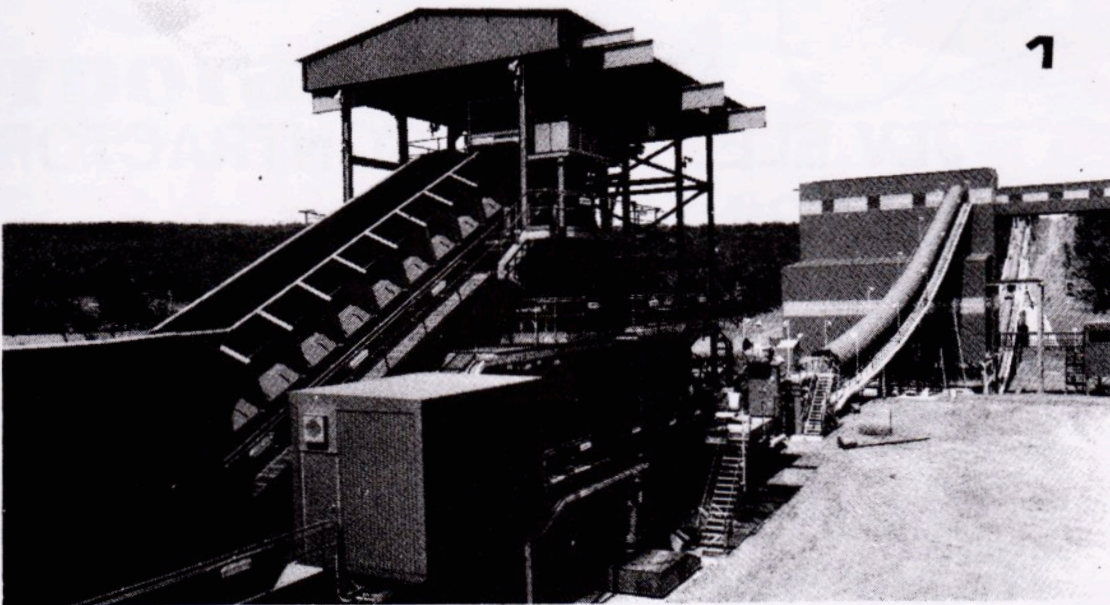
273 GREAT EASTERN HIGHWAY

274 1581



J.L.V. GROUP OF COMPANIES

CIVIL MECHANICAL and ELECTRICAL CONTRACTORS



(MOBILE PRIMARY CRUSHER AND MINESITE CONVEYOR, MOUNT SADDLEBACK, WESTERN AUSTRALIA)

A young and progressive Perth based construction company with International experience specialising in:

- Civil, Mechanical & Electrical Contracting
 - Project Management Services
 - Joint Venture Projects
 - Man Hoists
 - Urethane Products
 - Welding Technology
 - N.T.D., Hydrostatic Services
- Earthmoving & Excavation, Dams, Roads, Open Cut Mining

**85 McCOY STREET, MYAREE,
WESTERN AUSTRALIA 6154**

TELEPHONE (09) 330 5066: TELEX AA 95543

J.L.V. GROUP

CORPORATION LTD.



JLV CONSTRUCTORS Pty. Ltd.



**JLV ELECTRICAL CONTRACTORS
& ENGINEERS**



JLV PIPELINES



JLV DEFTLIFT PTY. LTD.



COLE PROJECT SERVICES Pty. Ltd.



**JLV
URETHANE & BELTING PRODUCTS**



**HEAD OFFICE: 85 McCOY ST. MYAREE
WESTERN AUSTRALIA**

Postal: P.O. Box 1162 Booragoon, 6154

Telephone: 330 5066

Telex: AA95543

FAX: 330 5362